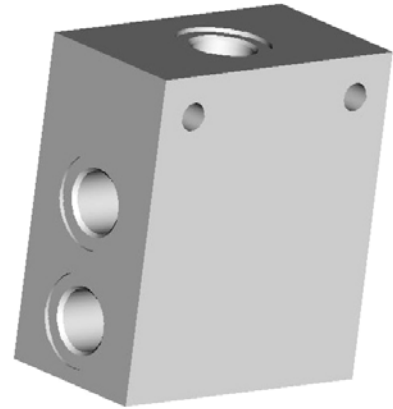
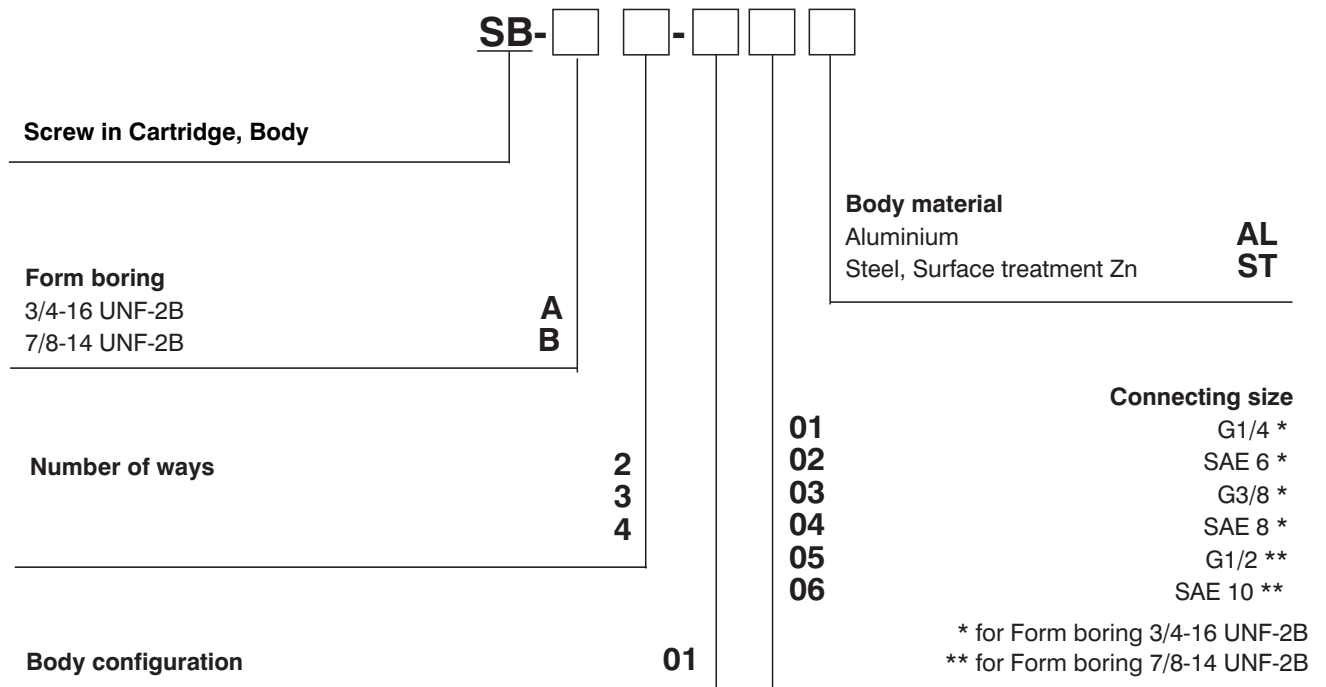


- Pipeline housing for cartridge valves
- Installation dimensions to ISO 4401 and SAE
- Materials available are aluminum and steel



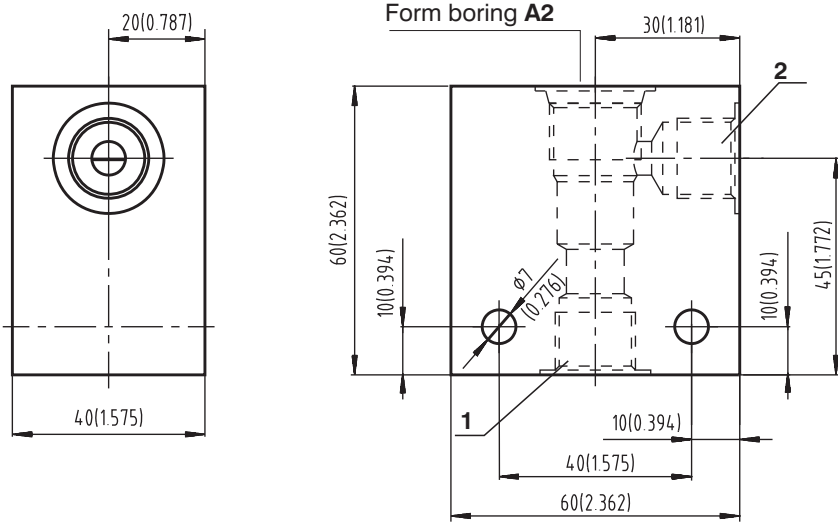
**Ordering Code**



# Form Boring - 3/4-16 UNF-2B

Dimensions millimeters (inches)

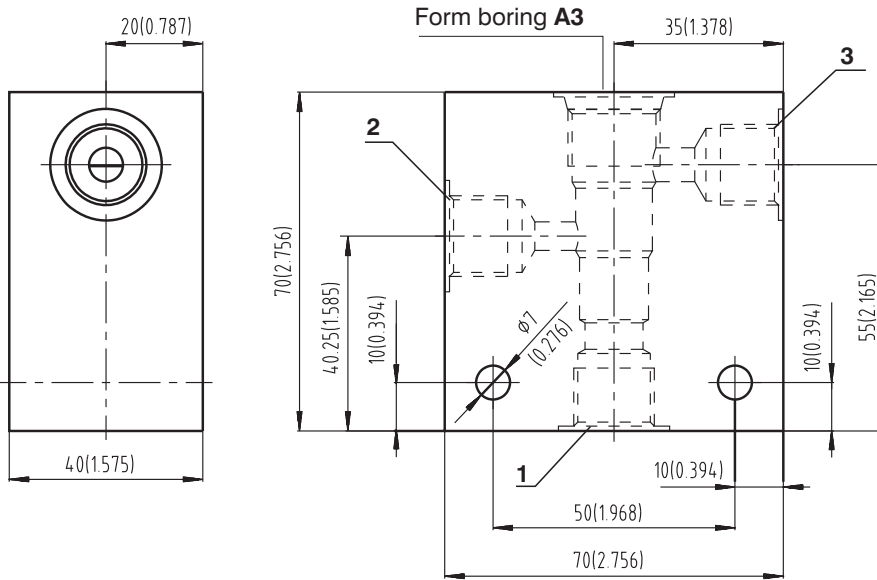
## Body for 2 Way SIC Valve



| Connections  |   |
|--------------|---|
| 1            | 2 |
| G1/4, G3/8   |   |
| SAE 6, SAE 8 |   |

| Body material | Pressure                 | Weight             |
|---------------|--------------------------|--------------------|
| Aluminium     | up to 250 bar (3626 PSI) | 0,56 kg (1,23 lbs) |
| Steel         | up to 420 bar (6091 PSI) | 1,57 kg (3.46 lbs) |

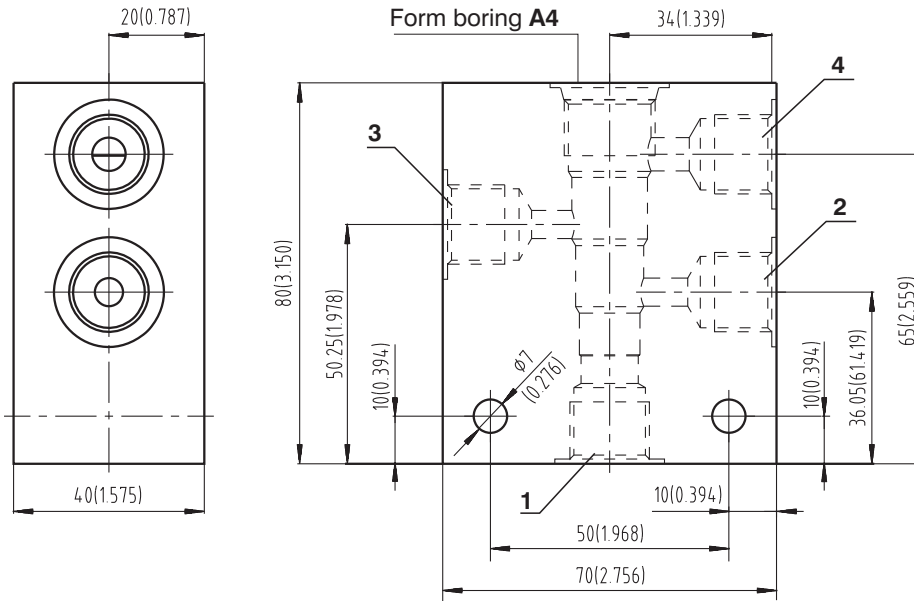
## Body for 3 Way SIC Valve



| Connections  |   |   |
|--------------|---|---|
| 1            | 2 | 3 |
| G1/4, G3/8   |   |   |
| SAE 6, SAE 8 |   |   |

| Body material | Pressure                 | Weight             |
|---------------|--------------------------|--------------------|
| Aluminium     | up to 250 bar (3626 PSI) | 0,63 kg (1,39 lbs) |
| Steel         | up to 420 bar (6091 PSI) | 1,78 kg (3,92 lbs) |

**Body for 4 Way SIC Valve**

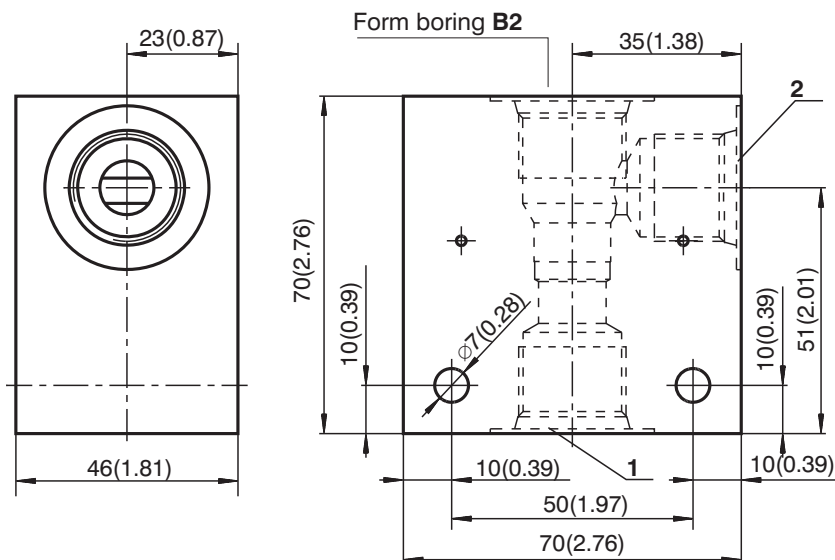


| Connections  |   |   |   |
|--------------|---|---|---|
| 1            | 2 | 3 | 4 |
| G1/4, G3/8   |   |   |   |
| SAE 6, SAE 8 |   |   |   |

| Body material | Pressure                 | Weight             |
|---------------|--------------------------|--------------------|
| Aluminium     | up to 250 bar (3626 PSI) | 0,76 kg (1,68 lbs) |
| Steel         | up to 420 bar (6091 PSI) | 0,53 kg (4,72 lbs) |

**Form Boring - 7/8-14 UNF-2B**

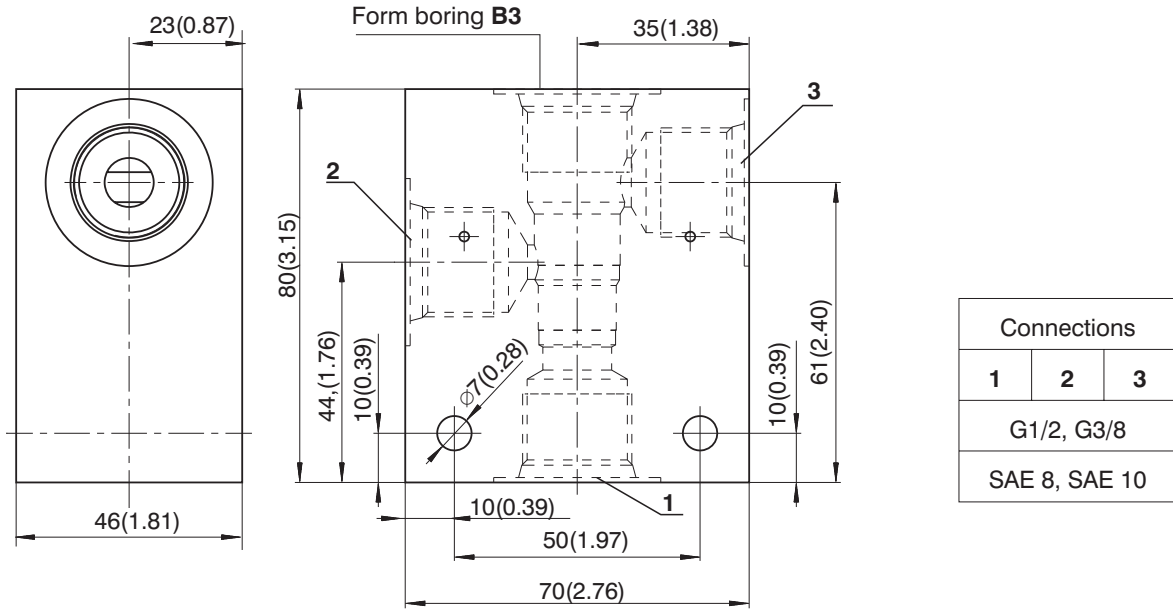
**Body for 3 Way SIC Valve**



| Connections   |   |
|---------------|---|
| 1             | 2 |
| G1/2, G3/8    |   |
| SAE 8, SAE 10 |   |

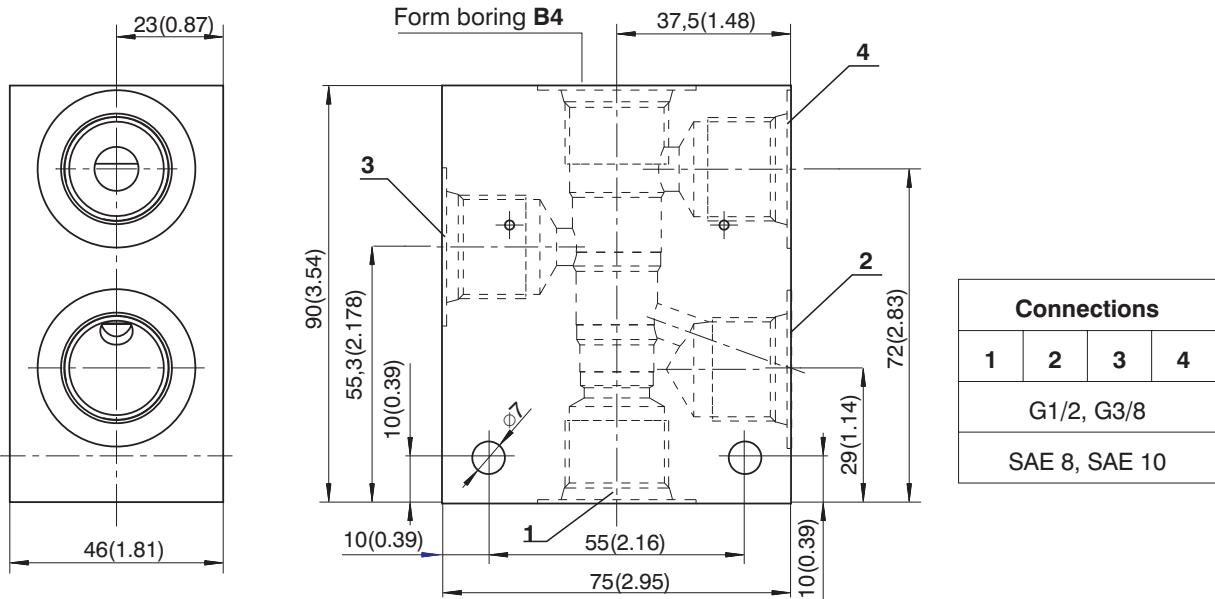
| Body material | Pressure                 | Weight              |
|---------------|--------------------------|---------------------|
| Aluminium     | up to 250 bar (3626 PSI) | 0,54 kg ( 1,19 lbs) |
| Steel         | up to 420 bar (6091 PSI) | 1,50 kg ( 3.31 lbs) |

**Body for 3 Way SIC Valve**



| Body material | Pressure                 | Weight              |
|---------------|--------------------------|---------------------|
| Aluminium     | up to 250 bar (3626 PSI) | 0,60 kg (1,32 lbs)  |
| Steel         | up to 420 bar (6091 PSI) | 1,68 kg ( 3,70 lbs) |

**Body for 4 Way SIC Valve**



| Body material | Pressure                 | Weight              |
|---------------|--------------------------|---------------------|
| Aluminium     | up to 250 bar (3626 PSI) | 0,71kg ( 1.57 lbs ) |
| Steel         | up to 420 bar (6091 PSI) | 1,99 kg ( 4.39 lbs) |

**Caution!**

- Recommended fixing bolts M6 x 55 DIN 912-10.9, bolt tightening torque 14+2 Nm (10.33+1.48 lbf.ft)
- The packing foil is recyclable.
- The technical information regarding the product presented in this catalogue is for descriptive purposes only. It should not be construed in any case as a guaranteed representation of the product properties in the sense of the law.

ARGO-HYTOS s.r.o. CZ - 543 15 Vrchlabí  
 Tel.: +420-499-403111, Fax: +420-499-403421  
 E-mail: sales.cz@argo-hytos.com  
 www.argo-hytos.com