



Oil Service Units

FA 016-1160

- Easy filling and cleaning
- Nominal flow rate 16 l/min
- Up to 30 bar

Oil service unit - FA 016-1160

FA 016-1160

With the oil service unit FA 016-1160 hydraulic or lubricating systems can be easily filled or cleaned.

Suitable for up to 30 bar

The unit is designed to operate up to 30 bar filling or system pressure. This allows e.g. filling and filtering of transmission fluids over valve blocks.

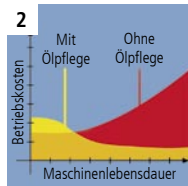


1. Compact and ready to connect

The FA 016-1160 is supplied ready to connect, with hose packages and filter elements.

2. Economical

By using ARGO-HYTOS fluid management systems, greater efficiency will be achieved. Fast return on investment by extended service intervals and increased machine availability.



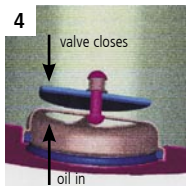
3. User-friendly filter element change

Optimal operator handling has been a key feature in the development of FA 016-1160. No extra tools are needed to open the housing and the filter element can be pulled out through the hang-in technique.



4. Maintenance-free filter housing thanks to a clever filter element technique

Fluid flows through the element from the centre outwards. The built-in dirt retention valve closes automatically when the element is removed, ensuring that all dirt is removed from the housing with the element.

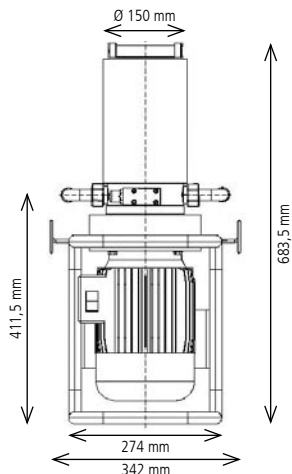


5. Quality in detail

The EXAPOR® fine element is the heart of the FA 016-1160. High cleanliness levels protect hydraulic systems against dirt during the oil filling process.



Dimensions



Dirt-holding capacity

Values in g test dust ISO MTD according to ISO 16889

Hydraulic fluids

Mineral oil and biodegradable fluids (HEES and HETG, see info sheet 00.20). Other fluids on request.

Temperature range of fluids/

Viscosity range

0 °C...+60 °C

Continuous operation min.: 15 mm²/s

Continuous operation max.: 400 mm²/s

Ambient temperature range

0 °C...+50 °C

Operating pressure

Max 30 bar

Clogging indicator

optical differential pressure indicator

Order no.	FA 016-1160
Nominal flow rate	16 l/min
Filter fineness	$\bar{\beta}_{3(c)} = 200^*$
Dirt-holding capacity	160 g*
Electric drive	1 ~ 230 V / 50 Hz; 1,5 kW, n = 3,000 min ⁻¹
Replacement element order no.	V7.1220-113
Weight	approx. 30 kg

*test dust ISO MTD according to ISO 16889

Hydraulic symbol

- 1 Suction strainer
- 2 Suction hose
- 3 Pump
- 4 Elektromotor
- 5 Pressure control valve
- 6 Fine filter element
- 7 Clogging indicator
- 8 Pressure hose

